

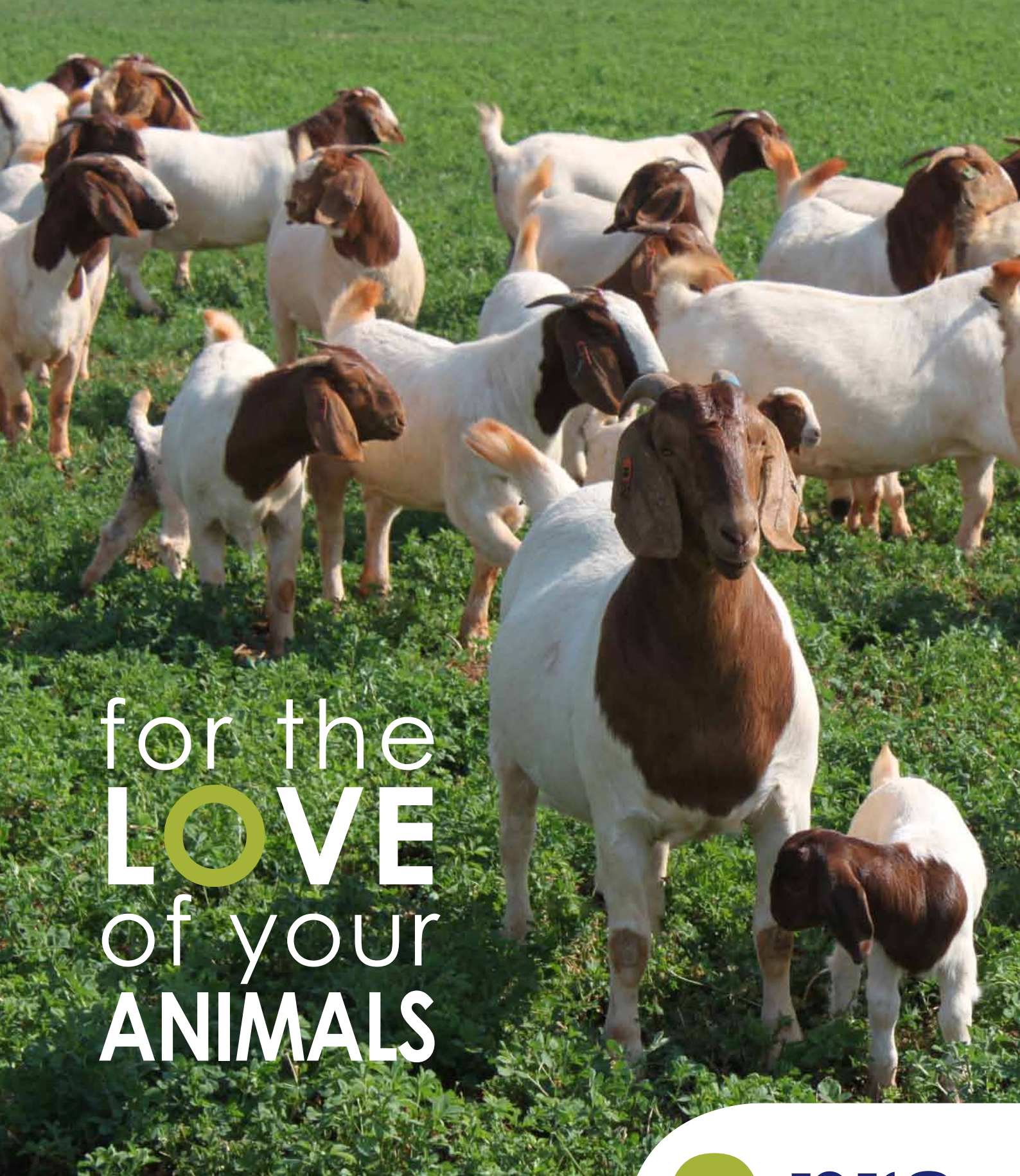
for the
LOVE
of your
ANIMALS

RUMINANT
PRODUCT MANUAL



INDEX

Sheep and Goat range	pages 2 – 23
Cattle range	pages 24 – 35
Lick range	pages 36 – 49
Dairy range	pages 50 – 63
Game range.....	pages 64 – 68
Contact us	page 69



for the
LOVE
of your
ANIMALS

SHEEP AND GOAT RANGE



QPro Lambing Pen Pellets

V28440 (Act 36 of 1947)

Product description

QPro Lambing Pen Pellets is a high-quality balanced feed for sheep/goats during late pregnancy/gestation and lactation. The pellets contain a balanced amount of bypass protein and energy, as well as minerals and trace minerals. This balanced feed supplies enough nutrients to meet the requirements for fetal growth and wool follicle development as well as for colostrum and milk production. The product also contains additives to reduce metabolic disorders associated with birth.

Feed recommendation

It is important that the rumen of the ewe is adapted to the change in diet from veld to a concentrated feed such as Lamb Pen Pellets in order to prevent any metabolic disorders. Adaptation should start at least 4 weeks before lambing. It is recommended that good-quality roughage is available for ewes at all times.

Pregnant ewes (singles)	2,0-2,5% of body mass
Pregnant ewes (multiples)	3,0% of body mass
Lactating ewes (singles)	3,0% of body mass
Lactating ewes (multiples)	3,0-3,5% of body mass

As supplementary feed for ewes on adequate veld:

Singles	500-800 g/animal/day
Multiples	800-1200 g/animal/day

For the **LOVE** of your

For more information and/or referral to your nearest technical adviser, contact our office on 058 303 9587

Specifications

Nutrient	Unit	Inclusion
Protein (min)	g/kg	150
NPN % (max)	%	15%
Urea (max)	g/kg	5
Moisture (max)	g/kg	120
Fat (min/max)	g/kg	25/70
Fibre (min/max)	g/kg	100/150
Ca (min/max)	g/kg	6/15
P (min)	g/kg	3

Although not shown in the table, this product contains a full range of macro and trace minerals in the mineral pack, formulated according to the nutritional needs of the animal.

Packaging

Available in 50 kg bags or in bulk.

Warning

This product contains NPN sources and/or registered medicaments. Feed strictly according to the instructions.



ANIMALS

Q-pro feeds

QPro Lamb Creep Pellets

V23839 (Act 36 of 1947)

Product description

QPro Lamb Creep Pellets is a high-quality balanced feed for lambs who are not weaned yet. The pellets contain a balanced amount of bypass protein and energy, as well as minerals and trace minerals. The aim of Lamb Creep Pellets is to optimally promote the lamb's growth during the suckling and weaning phase, to develop the rumen and to relieve the pressure on the ewe.

Feed recommendation

Lambs start to nibble on pellets from the age of 10-14 days. Start with 200 g/lamb/day and increase intake over a period of 10-14 days to 800-1000 g/lamb/day.

Specifications

Nutrient	Unit	Inclusion
Protein (min)	g/kg	175
NPN % (max)	%	0%
Urea (max)	g/kg	0
Moisture (max)	g/kg	120
Fat (min/max)	g/kg	25/70
Fibre (max)	g/kg	80
Ca (min/max)	g/kg	10/15
P (min)	g/kg	5

Although not shown in the table, this product contains a full range of macro and trace minerals in the mineral pack, formulated according to the nutritional needs of the animal.

For the LOVE of your

For more information and/or referral to your nearest technical adviser, contact our office on 058 303 9587



Packaging

Available in 50 kg bags or in bulk.

Warning

This product contains NPN sources and/or registered medicaments. Feed strictly according to the instructions.



ANIMALS

Q pro feeds

QPro Ram, Lamb and Ewe Pellets

V23846 (Act 36 of 1947)

Product description

QPro Ram, Lamb and Ewe Pellets serve as a supplementary feed for ewes and rams on grazing and veld to build condition and to maintain body mass. The product is also used for growing out young animals for breeding purposes.

Feed recommendation

If animals are not adapted to pellets, it is good practice to adapt them over a period of 7 days. Start with 200 g/animal/day and increase to the recommended intake.

Ewes on veld

Feed at 0,8-1% of body mass

Rams on veld

Feed at 0,8-1% of body mass

Young animals on veld

Feed at 0,8-1% of body mass

Growing out of replacement ewes

Feed at 0,8-1% of body mass



For the **LOVE** of your

For more information and/or referral to your nearest technical adviser, contact our office on 058 303 9587

Specifications

Nutrient	Unit	Inclusion
Protein (min)	g/kg	130
NPN % (max)	%	28,4%
Urea (max)	g/kg	10
Moisture (max)	g/kg	120
Fat (min/max)	g/kg	25/70
Fibre (min/max)	g/kg	60/150
Ca (min/max)	g/kg	6/15
P (min)	g/kg	3

Although not shown in the table, this product contains a full range of macro and trace minerals in the mineral pack, formulated according to the nutritional needs of the animal.

Packaging

Available in 50 kg bags or in bulk.

Warning

This product contains NPN sources and/or registered medicaments. Feed strictly according to the instructions.



ANIMALS

Q-pro feeds

QPro Sheep Finishing Pellets

V21658 (Act 36 of 1947)

Product description

QPro Sheep Finishing Pellets is a high-quality balanced feed for the finishing of lambs and cull animals. It contains a balanced amount of bypass protein and energy as well as minerals and trace minerals. It also contains the necessary additives such as buffers and ammonium chloride to prevent metabolic disorders and kidney stones as well as growth promoters for optimal growth.

Feed recommendation

Adaption:	
Day 1-2:	Limit complete feed to 1,5% of body mass per animal per day plus ad lib hay/roughage.
Day 3-4:	Limit complete feed to 2,0% of body mass per animal per day plus ad lib hay/roughage.
Day 5-6:	Limit complete feed to 2,5% of body mass per animal per day plus ad lib hay/roughage.
Day 7-10:	Limit complete feed to 3,0% of body mass per animal per day plus ad lib hay/roughage.

Once animals are fully adapted and show no signs of acidosis, feed ad lib of the complete feed and remove the hay/roughage.

For the **LOVE** of your

For more information and/or referral to your nearest technical adviser, contact our office on 058 303 9587

Specifications

Nutrient	Unit	Inclusion
Protein (min)	g/kg	130
NPN % (max)	%	39,1%
Urea (max)	g/kg	12
Moisture (max)	g/kg	120
Fat (min/max)	g/kg	25/70
Fibre (max)	g/kg	150
Ca (min/max)	g/kg	6/10
P (min)	g/kg	3

Although not shown in the table, this product contains a full range of macro and trace minerals in the mineral pack, formulated according to the nutritional needs of the animal.

Packaging

Available in 50 kg bags or in bulk.

Warning

This product contains NPN sources and/or registered medicaments. Feed strictly according to the instructions.



ANIMALS

Q-pro feeds

QPro Stud Ram Pellets

V28704 (Act 36 of 1947)

Product description

QPro Stud Ram Pellets are formulated to exploit the genetic potential of show and breeding rams by providing the correct amount of good-quality nutrients at the right time. It contains the necessary natural bypass protein that improves muscle and structure growth and develops frame size. At the same time the product contains sufficient energy required to build the condition of the rams. QPro Stud Ram Pellets contain sufficient ammonium chloride to prevent kidney stones.

Feed recommendation

It is recommended that rams are adapted well to the pellets first. Start with 200 g/ram/day and increase intake over a period of 7-10 days to get to a maximum intake of 1 800 g/ram/day or 1,5% of body mass. Roughage should always be available.

Specifications

Nutrient	Unit	Inclusion
Protein (min)	g/kg	130
NPN % (max)	%	40%
Urea (max)	g/kg	10
Moisture (max)	g/kg	120
Fat (min/max)	g/kg	25/50
Fibre (min/max)	g/kg	110/150
Ca (min/max)	g/kg	9,5/11
P (min)	g/kg	4,5

Although not shown in the table, this product contains a full range of macro and trace minerals in the mineral pack, formulated according to the nutritional needs of the animal.

For the LOVE of your

For more information and/or referral to your nearest technical adviser, contact our office on 058 303 9587



Packaging

Available in 50 kg bags or in bulk.

Warning

This product contains NPN sources and/or registered medicaments. Feed strictly according to the instructions.



ANIMALS

Qpro
feeds

QPro Super Sheep Concentrate

V28705 (Act 36 of 1947)

Product description

QPro Super Sheep Concentrate is a high-quality protein concentrate containing both natural protein and NPN sources. The product is formulated for the rounding off of feedlot lambs where the producer wants to utilise his own roughage and grains.

Feed recommendation

This concentrate is mixed with roughage and grains. The adaptation of animals to the fully mixed ration is like that of the QPro Sheep Finishing Pellet.

Adaptation:	
Day 1-2:	Limit complete feed to 1,5% of body mass per animal per day plus ad lib hay/roughage.
Day 3-4:	Limit complete feed to 2,0% of body mass per animal per day plus ad lib hay/roughage.
Day 5-6:	Limit complete feed to 2,5% of body mass per animal per day plus ad lib hay/roughage.
Day 7-10:	Limit complete feed to 3,0% of body mass per animal per day plus ad lib hay/roughage.

Once animals are fully adapted and show no signs of acidosis, feed ad lib of the complete feed and remove the hay/roughage.

For the LOVE of your

For more information and/or referral to your nearest technical adviser, contact our office on 058 303 9587

Specifications

Nutrient	Unit	Inclusion
Protein (min)	g/kg	350
NPN % (max)	%	40,38%
Urea (max)	g/kg	35
Moisture (max)	g/kg	120
Fat (min/max)	g/kg	25/75
Fibre (max)	g/kg	150
Ca (min/max)	g/kg	15/30
P (min)	g/kg	5

Although not shown in the table, this product contains a full range of macro and trace minerals in the mineral pack, formulated according to the nutritional needs of the animal.

ANIMALS

Q **pro**
feeds

Mixtures

	Complete Lamb Creep Meal	Feedlot Starter Ration	Feedlot Grower Ration	Rams	Stimulant Feed Ram Lamb Ewe
Raw materials	kg	kg	kg	kg	kg
QPro Super Sheep Concentrate	150	150	150	150	150
QPro Bypass 34	100	50	50	50	50
Maize meal/Chop	550	550	600	525	450
Molasses meal	80	80	80	80	80
Lucerne meal (finely ground)	150	175	125	200	250
Total	1030	1050	1005	1005	980
Roughage (on the side)		Day 1 to 10		Day 1 to 14	Ad lib
Recommended intake of feed	Ad lib	Ad lib	Ad lib	1,5 - 2% of body mass	
Ewes with lambs					400 - 600 g
Flush feeding					300 - 400 g
Supplementation					300 - 600 g
	Composition of ration				
Protein % (min)	16,2	15,3	14,7	15	16
Protein % from NPN (max)	8,0	8,25	8,8	8,5	7,9
Fibre % (max)	8,5	8,9	7,9	10,6	11,7
Calcium % (max)	0,8	0,8	0,7	0,9	1,0
Phosphate % (min)	0,4	0,3	0,3	0,3	0,3

For the **LOVE** of your

For more information and/or referral to your nearest technical adviser, contact our office on 058 303 9587



Packaging

Available in 50 kg bags or in bulk.

Warning

This product contains NPN sources and/or registered medicaments. Feed strictly according to the instructions.



ANIMALS

Q-pro feeds

QPro Ultra Wool 30

(V23988) (Act 36 of 1947)

Product description

QPro Ultra Wool 30 is a high-protein supplementary lick of excellent quality for sheep, focusing on pregnant AND lactating ewes on veld. This product contains sulphur-containing amino acids and high inclusions of bypass protein sources to ensure optimal milk production (with fluid colostrum) and growth as well as preventing wool breakage in stressful conditions and winter time. The lick also contains NPN sources that provide sufficient nitrogen for microorganisms to better utilise veld with a high fibre content.

Feed recommendation

When QPro Ultra Wool 30 is used as a supplement, adequate grazing/veld should be available to prevent excess intake. The lick contains NPN sources and therefore animals should not eat too much of the lick. It is good practice to provide an ordinary salt/phosphate lick to animals prior to feeding licks containing NPN.

Ewes on veld	300-400 g/ewe/day
--------------	-------------------

Ewes on veld with lambs	300-500 g/ewe/day
-------------------------	-------------------



For the LOVE of your

For more information and/or referral to your nearest technical adviser, contact our office on 058 303 9587

Specifications

Nutrient	Unit	Inclusion
Protein (min)	g/kg	300
NPN % (max)	%	47,48%
Urea (max)	g/kg	45
Moisture (max)	g/kg	120
Fat (min/max)	g/kg	45
Fibre (max)	g/kg	65
Ca (max)	g/kg	21
P (min)	g/kg	6,4

Although not shown in the table, this product contains a full range of macro and trace minerals in the mineral pack, formulated according to the nutritional needs of the animal.

Packaging

Available in 50 kg bags or in bulk.

Warning

This product contains NPN sources and/or registered medicaments. Feed strictly according to the instructions.



ANIMALS

Q-pro feeds

QPro Sheep Winter Lick

(V23989) (Act 36 of 1947)

Product description

QPro Sheep Winter Lick is a high-protein maintenance lick for sheep, focusing on animals that are spending the winter on veld or pastures. This product contains sulphur-containing amino acids and high inclusions of bypass protein sources to ensure optimal milk production (with fluid colostrum) and growth as well as preventing wool breakage in stressful conditions and winter time. The lick also contains NPN sources that provide sufficient nitrogen for microorganisms to better utilise veld with a high fibre content.

Feed recommendation

When QPro Sheep Winter Lick is used as a supplement, adequate grazing/pasture should be available to prevent excess intake. The lick contains NPN sources and therefore animals should not eat too much of the lick. It is good practice to provide an ordinary salt/phosphate lick to animals prior to feeding licks containing NPN.

Ewes on veld

150-200 g/ewe/day



For the **LOVE** of your

For more information and/or referral to your nearest technical adviser, contact our office on 058 303 9587

Specifications

Nutrient	Unit	Inclusion
Protein (min)	g/kg	300
NPN % (max)	%	49,47%
Urea (max)	g/kg	50
Moisture (max)	g/kg	120
Fat (min/max)	g/kg	20/45
Fibre (max)	g/kg	90
Ca (max)	g/kg	21
P (min)	g/kg	3,5

Although not shown in the table, this product contains a full range of macro and trace minerals in the mineral pack, formulated according to the nutritional needs of the animal.

Packaging

Available in 50 kg bags or in bulk.

Warning

This product contains NPN sources and/or registered medicaments. Feed strictly according to the instructions.



ANIMALS

Q-pro feeds

QPro Bypass 34

(V31227) (Act 36 of 1947)

Product description

QPro Bypass 34 is a high-protein concentrate formulated with a combination of three to four natural protein sources. This product contains no urea, meaning that it has a high bypass protein content that is extremely beneficial for the growth of young, lactating or pregnant animals. Bypass 34 is an ideal product to add to mixtures for young growing calves, sheep or game. This product also contains rumen-protected fats that increase the energy density of the ration and are extremely beneficial for pregnant and lactating animals with high energy requirements.

Feed recommendation

This product is mixed with NPN-containing concentrates, maize/chop and roughage to increase the bypass protein fraction of the rations. General mixtures to which the product can be added:

- Lamb creep mash – stimulates growth of frame and muscle mass.
- Lamb pen pellets or lick for pregnant/lactating ewes support healthy and optimal growth of the fetus and wool follicles of the lamb, stimulate milk production and assist with the fluidity of colostrum and milk.
- Feedlot starter rations – stimulate frame and muscle mass growth.
- Contact the QPro technical team for more information and assistance with the formulation of rations.
- QPro Bypass 34 can be mixed into game mixtures to increase the protein of the mixture.
- Frame and muscle growth in bulls.

For the **LOVE** of your

For more information and/or referral to your nearest technical adviser, contact our office on 058 303 9587

Specifications

Nutrient	Unit	Inclusion
Protein (min)	g/kg	340
Moisture (max)	g/kg	120
Fat (min/max)	g/kg	25/75
Fibre (max)	g/kg	150
Ca (min/max)	g/kg	8/15
P (min)	g/kg	8

Although not shown in the table, this product contains a full range of macro and trace minerals in the mineral pack, formulated according to the nutritional needs of the animal.

Packaging

Available in 50 kg bags or in bulk.



ANIMALS

Q-pro feeds

For more information and/or referral to your nearest technical adviser, contact our office on 058 303 9587



for the
LOVE
of your
ANIMALS

CATTLE RANGE

Q *pro*
feeds

QPro Vetbees Phase D

(V23836) (Act 36 of 1947)

Product description

QPro Vetbees Phase D is formulated for bulls going through the phase D test, but also to exploit the genetic potential of show and breeding bulls by providing the correct amount of good-quality nutrients at the right time. It contains the necessary natural bypass protein that promotes muscular and skeletal development. At the same time it contains sufficient energy required to build the condition of the bulls. Phase D can also be used for background purposes.

Feed recommendation

Animals should always be adapted to concentrates. Therefore, feed 2-3 kg/animal Phase D on day 1 and increase intake with 500 g/animal/day until an intake of approximately 1,5% of body mass is reached. It is beneficial to divide the total feed into two meals (morning and afternoon). It is important to feed this concentrate together with sufficient veld or roughage.



For the **LOVE** of your

For more information and/or referral to your nearest technical adviser, contact our office on 058 303 9587

Specifications

Nutrient	Unit	Inclusion
Protein (min)	g/kg	130
NPN % (max)	%	22,07%
Urea (max)	g/kg	10
Moisture (max)	g/kg	120
Fat (min/max)	g/kg	25/75
Fibre (max)	g/kg	120
Ca (max)	g/kg	10
P (min)	g/kg	3

Although not shown in the table, this product contains a full range of macro and trace minerals in the mineral pack, formulated according to the nutritional needs of the animal.

Packaging

Available in 50 kg bags.

Warning

This product contains NPN sources and/or registered medicaments. Feed strictly according to the instructions.



ANIMALS

Q-pro feeds

QPro Vetbees 40

(V21670) (Act 36 of 1947)

Product description

QPro Vetbees 40 is a balanced finisher or feedlot concentrate that is used with maize or chop and roughage/silage. This concentrate contains sufficient protein, energy, macro and micro minerals as well as a growth promoter to achieve optimal growth.

Feed recommendation

Cattle can be fed 2-3 kg/animal/day on day 1. Thereafter intake can be increased with 500-1000 g/animal/day until animals are consuming feed ad lib. Ensure that roughage or bales are freely available during the adaptation period. Make sure that there is enough feeding space and keep feeding troughs full. Ensure that clean drinking water is always available.



For the **LOVE** of your

For more information and/or referral to your nearest technical adviser, contact our office on 058 303 9587

Specifications

Nutrient	Unit	Inclusion
Protein (min)	g/kg	450
NPN % (max)	%	64,6%
Urea (max)	g/kg	90
Moisture (max)	g/kg	120
Fat (min/max)	g/kg	25
Fibre (max)	g/kg	120
Ca (max)	g/kg	40
P (min)	g/kg	12

Although not shown in the table, this product contains a full range of macro and trace minerals in the mineral pack, formulated according to the nutritional needs of the animal.

Packaging

Available in 50 kg bags or in bulk.

Warning

This product contains NPN sources and/or registered medicaments. Feed strictly according to the instructions.



ANIMALS

Q-pro feeds

Mixtures

	Complete calf grower meal	Feedlot starter ration	Feedlot grower ration	Bulls phase D/C	Feedlot cafeteria system
Raw materials	kg	kg	kg	kg	kg
QPro Vetbees 40	100	100	100	100	100
QPro Bypass 34	100	50		50	50
Maize meal/Chop	575	650	700	650	700
Molasses meal	80	120	120	80	120
Roughage		100	100	175	
Lucerne meal	150				
Total	1005	1020	1020	1055	970
Roughage (on the side)	Ad lib	Day 1 to 21		Day 1 to 21	Ad lib
Recommended intake of feed	1-1,5 kg/day	Ad lib	Ad lib	3% of body mass	Ad lib + roughage
	Composition of ration				
Protein % (min)	16	12,1	11,3	12	13,1
Protein % from NPN (max)	6,7	8,8	9,9	8,7	8,8
Fibre % (max)	7,8	8,1	7,9	9,9	5
Calcium % (max)	0,7	0,5	0,5	0,5	0,5
Phosphate % (min)	0,4	0,4	0,3	0,4	0,4

For the **LOVE** of your

For more information and/or referral to your nearest technical adviser, contact our office on 058 303 9587



ANIMALS

Q **pro**
feeds

QPro Vetbees 14

(V21656) (Act 36 of 1947)

Product description

QPro Vetbees 14 is a balanced semi-complete ration formulated for the finishing of cattle. This product can be used where the client produces and wants to use his own roughage. It has a good protein to energy balance and contains the necessary vitamins and trace minerals as well as growth promoters to achieve optimal growth.

Feed recommendation

Cattle can be fed 2-3 kg/animal/day on day 1. Thereafter intake can be increased with 500-1000 g/animal/day until animals are consuming feed ad lib. Ensure that roughage or bales are freely available during the adaptation period. Roughage always have to be available together with QPro Vetbees 14. Make sure that there is enough feeding space and keep feeding troughs full. Ensure that clean drinking water is always available.



For the **LOVE** of your

For more information and/or referral to your nearest technical adviser, contact our office on 058 303 9587

Specifications

Nutrient	Unit (wet basis)	Inclusion
Protein (min)	g/kg	140
NPN % (max)	%	26,35%
Urea (max)	g/kg	10
Moisture (max)	g/kg	120
Fat (min/max)	g/kg	25/75
Fibre (max)	g/kg	120
Ca (max)	g/kg	10
P (min)	g/kg	3

Although not shown in the table, this product contains a full range of macro and trace minerals in the mineral pack, formulated according to the nutritional needs of the animal.

Packaging

Available in 50 kg bags.

Warning

This product contains NPN sources and/or registered medicaments. Feed strictly according to the instructions.



ANIMALS

Q-pro feeds

QPro Complete Beef Finisher 12

(V30727) (Act 36 of 1947)

Product description

QPro Complete Beef Finisher 12 is a complete product containing roughage and is convenient for the client who does not have grain or roughage at his disposal. This product has a good protein to energy balance and contains the necessary vitamins and trace minerals as well as growth promoters to achieve optimal growth.

Feed recommendation

Cattle can be fed 2-3 kg/animal/day on day 1. Thereafter intake can be increased with 500-1000 g/animal/day until animals are consuming feed ad lib. Ensure that roughage or bales are freely available during the adaptation period. If no metabolic disorders occur, the additional roughage can be withdrawn from day 10. Ensure that clean drinking water is always available and keep feeding troughs full.

For the **LOVE** of your

For more information and/or referral to your nearest technical adviser, contact our office on 058 303 9587

Specifications

Nutrient	Unit	Inclusion
Protein (min)	g/kg	120
NPN % (max)	%	38,63%
Urea (max)	g/kg	9,2
Moisture (max)	g/kg	120
Fat (min)	g/kg	25
Fibre (max)	g/kg	200
Ca (min/max)	g/kg	4,5/10
P (min)	g/kg	2,5

Although not shown in the table, this product contains a full range of macro and trace minerals in the mineral pack, formulated according to the nutritional needs of the animal.

Packaging

Available in 50 kg bags.

Warning

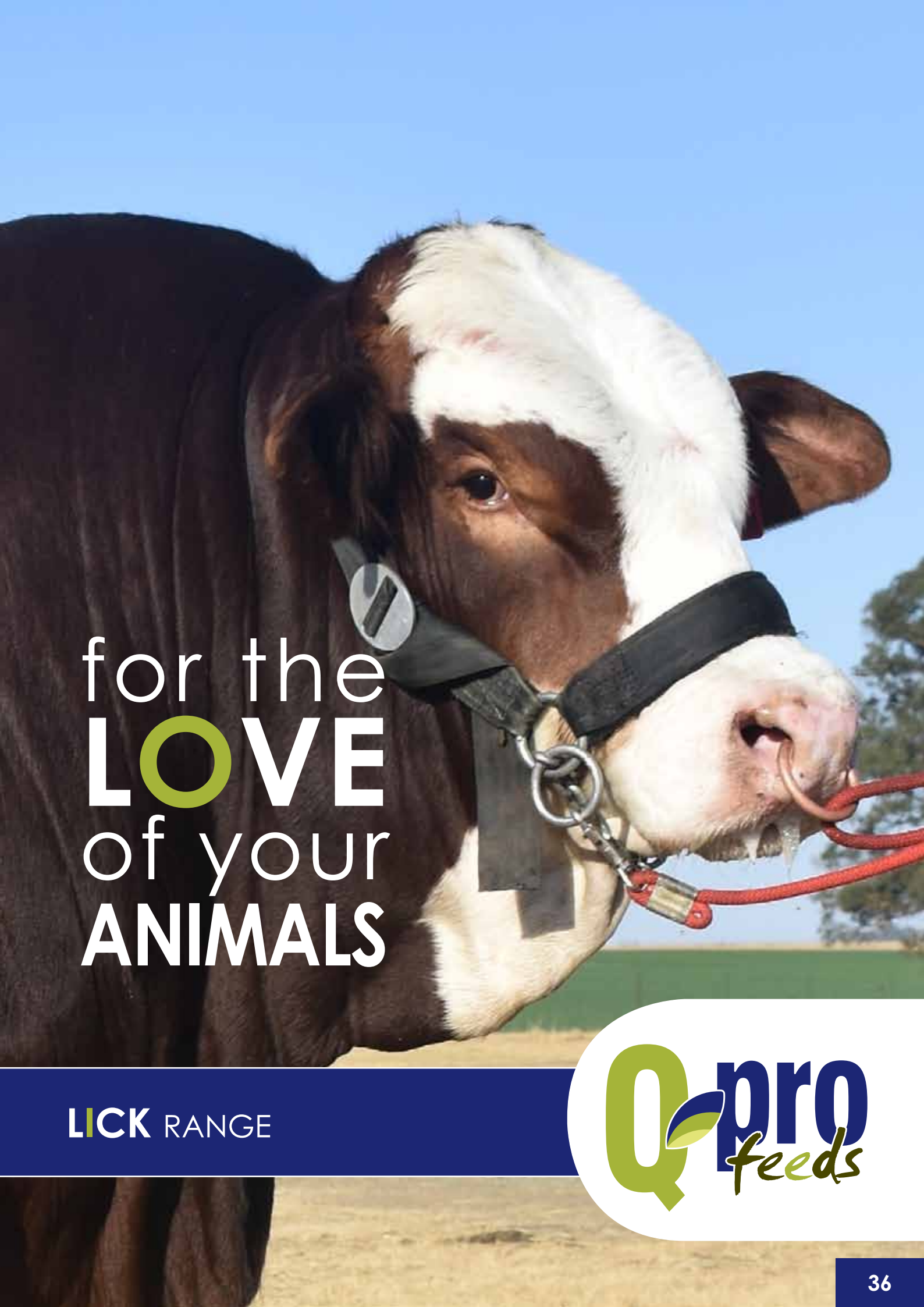
This product contains NPN sources and/or registered medicaments. Feed strictly according to the instructions.



ANIMALS

Q-pro feeds

For more information and/or referral to your nearest technical adviser, contact our office on 058 303 9587



for the
LOVE
of your
ANIMALS

LICK RANGE



QPro Sumphos 15 P6

V28697 (Act 36 of 1947)

Product description

QPro Sumphos 15 P6 is a ready-mixed phosphate and trace mineral supplement for cattle, sheep and ruminant game on green grazing or summer veld. Additionally QPro Sumphos 15 P6 contains 15% crude protein that is beneficial for mid summer drought conditions. QPro Sumphos 15 P6 can also be used as transitional lick to winter veld.

Feed recommendation

This product contains NPN sources and animals have to be adapted to lick or salt lick to prevent excess intake.

Cattle	100-200 g/animal/day
Sheep	20-40 g/animal/day
Small game	15-45 g/animal/day
Large game	80-100 g/animal/day

For the **LOVE** of your

For more information and/or referral to your nearest technical adviser, contact our office on 058 303 9587

Specifications

Nutrient	Unit	Inclusion
Protein (min)	g/kg	150
NPN % (max)	%	76,53%
Urea (max)	g/kg	40
Moisture (max)	g/kg	120
Fat (min/max)	g/kg	15/70
Fibre (min/max)	g/kg	50/70
Ca (min/max)	g/kg	60/120
P (min)	g/kg	60
Mn	mg/kg	734
Cu	mg/kg	310,8
Co	mg/kg	3,7
Fe	mg/kg	1652,4
I	mg/kg	21,5
Zn	mg/kg	932,8
Se	mg/kg	6

Packaging

Available in 50 kg bags.

Warning

This product contains NPN source.

Feed strictly according to the instructions.



ANIMALS

QPro Hefgrow 17

V28841 (Act 36 of 1947)

Product description

QPro Hefgrow 17 is a high-quality lick used on summer grazing or green pastures for growing out young animals (cattle and sheep). The product is ideal for backgrounding of calves. It is formulated with bypass protein of high quality, sufficient energy and the necessary vitamins and trace elements to benefit growth. The product also contains a growth promoter to ensure optimum growth.

Feed recommendation

QPro Hefgrow 17 is a lick and not a complete feed. It is therefore important that enough grazing/green fodder are always available to maintain recommended intakes.

Cattle	800-1200 g/animal/day
--------	-----------------------

Sheep	300-400 g/animal/day
-------	----------------------



For the **LOVE** of your

For more information and/or referral to your nearest technical adviser, contact our office on 058 303 9587

Specifications

Nutrient	Unit	Inclusion
Protein (min)	g/kg	170
NPN % (max)	%	22,40%
Urea (max)	g/kg	10
Moisture (max)	g/kg	120
Fat (min/max)	g/kg	25/70
Fibre (max)	g/kg	150
Ca (max)	g/kg	15
P (min)	g/kg	3

Although not shown in the table, this product contains a full range of macro and trace minerals in the mineral pack, formulated according to the nutritional needs of the animal.

Packaging

Available in 50 kg bags.

Warning

This product contains NPN sources and/or registered medicaments. Feed strictly according to the instructions.



ANIMALS

Q-pro feeds

QPro Production Lick 28

V23837 (Act 36 of 1947)

Product description

QPro Production Lick 28 is a ready mixed lick that provides enough protein and energy as well as vitamins and trace minerals to the animal in times of deficiency. This product helps to reduce weight loss of cows after calving and it supports good milk production. QPro Production Lick 28 can also be used as flush feeding before mating season.

Feed recommendation

QPro Production Lick 28 is a lick and not a complete feed. It is therefore important that enough grazing/green fodder are always available to maintain recommended intakes.

Cattle	800-1200 g/animal/day
--------	-----------------------

Sheep	200-250 g/animal/day
-------	----------------------



For the **LOVE** of your

For more information and/or referral to your nearest technical adviser, contact our office on 058 303 9587

Specifications

Nutrient	Unit	Inclusion
Protein (min)	g/kg	280
NPN % (max)	%	51,20%
Urea (max)	g/kg	50
Moisture (max)	g/kg	120
Fat (min/max)	g/kg	20/40
Fibre (min/max)	g/kg	50/70
Ca (min/max)	g/kg	12/15
P (min)	g/kg	6

Although not shown in the table, this product contains a full range of macro and trace minerals in the mineral pack, formulated according to the nutritional needs of the animal.

Packaging

Available in 50 kg bags.

Warning

This product contains NPN sources and/or registered medicaments. Feed strictly according to the instructions.



ANIMALS

Q-pro feeds

QPro Winter Lick 45

V23848 (Act 36 of 1947)

Product description

QPro Winter Lick 45 is a ready mixed maintenance lick for cattle on dry winter veld. This product is formulated with the necessary protein and mineral composition to stimulate the intake and digestion of dry grass. It also stimulates the animal's appetite to reduce weight loss and to help prevent dry gall sickness. QPro Winter Lick 45 can also be mixed with maize/chop at a 50:50 ratio to form a production lick.

Feed recommendation

Before feeding QPro Winter Lick 45 (containing NPN sources), animals have to be adapted to lick (salt block or phosphate lick) to prevent excess intake in salt-hungry animals. Animals can be adapted on Sumphos15 P6. Excess intake can lead to NPN poisoning.

Never feed a salt block together with QPro Winter Lick 45 in winter.

Cattle maintenance lick	400-500 g/animal/day
-------------------------	----------------------

Cattle production lick	800-1200 g/animal/day
------------------------	-----------------------



For the **LOVE** of your

For more information and/or referral to your nearest technical adviser, contact our office on 058 303 9587

Specifications

Nutrient	Unit	Inclusion
Protein (min)	g/kg	450
NPN % (max)	%	76,5%
Urea (max)	g/kg	120
Moisture (max)	g/kg	120
Fat (min/max)	g/kg	20/40
Fibre (min/max)	g/kg	50/70
Ca (min/max)	g/kg	10/30
P (min)	g/kg	5

Although not shown in the table, this product contains a full range of macro and trace minerals in the mineral pack, formulated according to the nutritional needs of the animal.

Packaging

Available in 50 kg bags.

Warning

This product contains NPN sources and/or registered medicaments. Feed strictly according to the instructions.



ANIMALS

Q-pro feeds

QPro Winter Lick Concentrate

V28695 (Act 36 of 1947)

Product description

QPro Winter Lick Concentrate can be used for home mixing of different licks. The concentrate is formulated to supply sufficient protein and the necessary minerals and trace elements.

Feed recommendation

Adaptation to licks are always important if animals are not used to lick supplements. Adapt animals with salt blocks or phosphate lick for 5-7 days before NPN-containing licks are fed. See table below for various mixtures.



For the **LOVE** of your

For more information and/or referral to your nearest technical adviser, contact our office on 058 303 9587

Specifications

Nutrient	Unit	Inclusion
Protein (min)	g/kg	750
NPN % (max)	%	76%
Urea (max)	g/kg	200
Moisture (max)	g/kg	120
Fat (min/max)	g/kg	33/66
Fibre (min/max)	g/kg	85/117
Ca (min/max)	g/kg	17/50
P (min)	g/kg	8,3

Although not shown in the table, this product contains a full range of macro and trace minerals in the mineral pack, formulated according to the nutritional needs of the animal.

Packaging

Available in 50 kg bags.

Warning

This product contains NPN sources and/or registered medicaments. Feed strictly according to the instructions.



ANIMALS

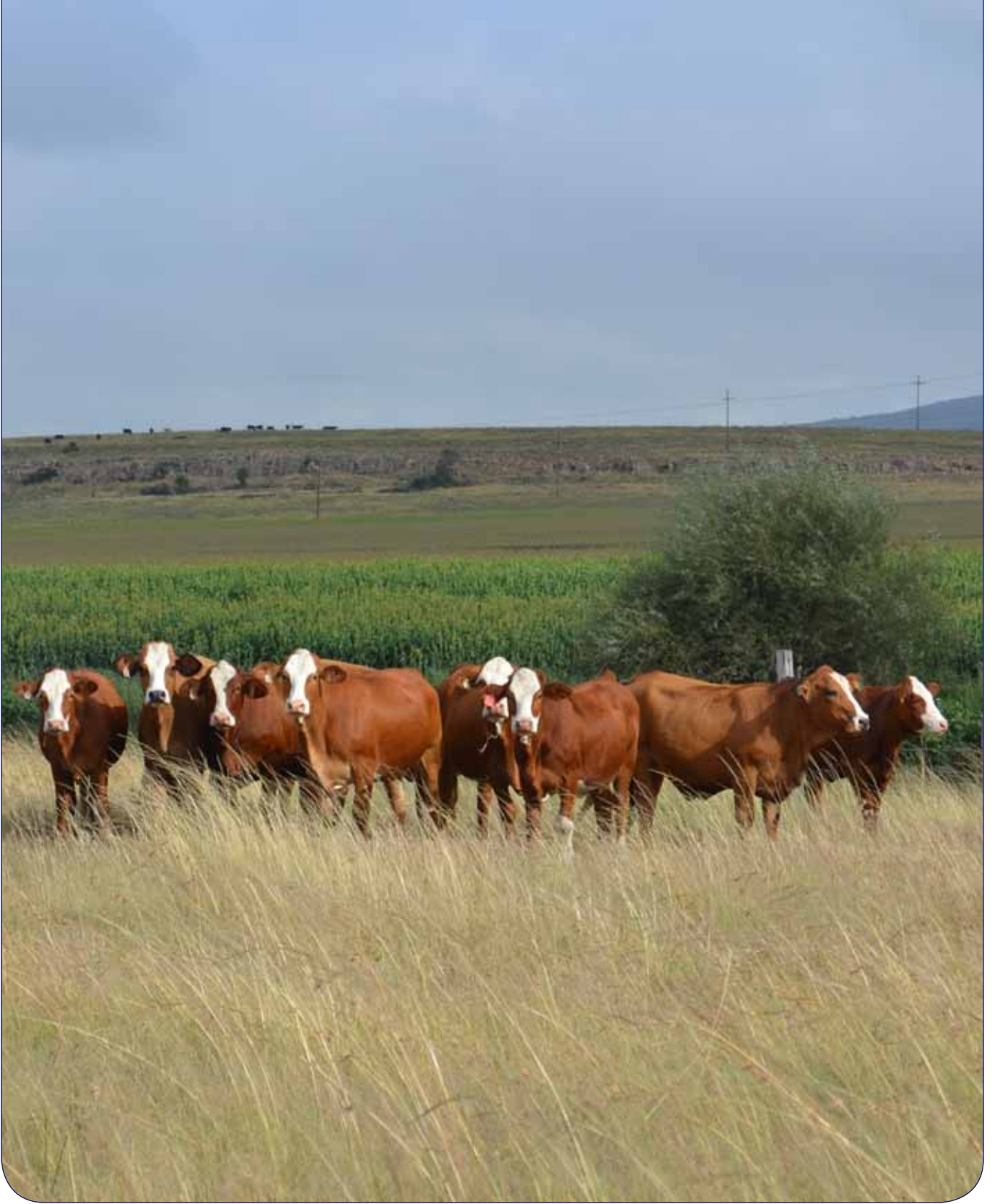
Q-pro feeds

Mixtures

	Maintenance lick	Production lick	Maintenance lick	Production lick
	Cattle	Cattle	Cattle/Sheep	Cattle/Sheep
Raw materials	kg	kg	kg	kg
QPro Winter Lick Concentrate	600	400	350	250
QPro Bypass 34			50	100
Maize meal/chop		400	350	350
Molasses meal				120
Salt	400	200	250	150
Total	1000	1000	1000	970
Recommended intake of lick	g/animal/day			
Dry cattle	350-500 g		600-700 g	
Cows with calves/heifers		800-1000 g		1500-2000 g
Dry ewes			120-150 g	
Ewes with lambs				200-300 g
	Composition of ration			
Protein % (min)	44	35,2	32,5	27,5
Protein % from NPN (max)	86	78,2	74,1	64,5
Fibre % (max)	3,3	3,6	3,5	5
Calcium % (max)	2,6	1,9	1,7	1,4
Phosphate % (min)	0,4	0,4	0,4	0,4

For the **LOVE** of your

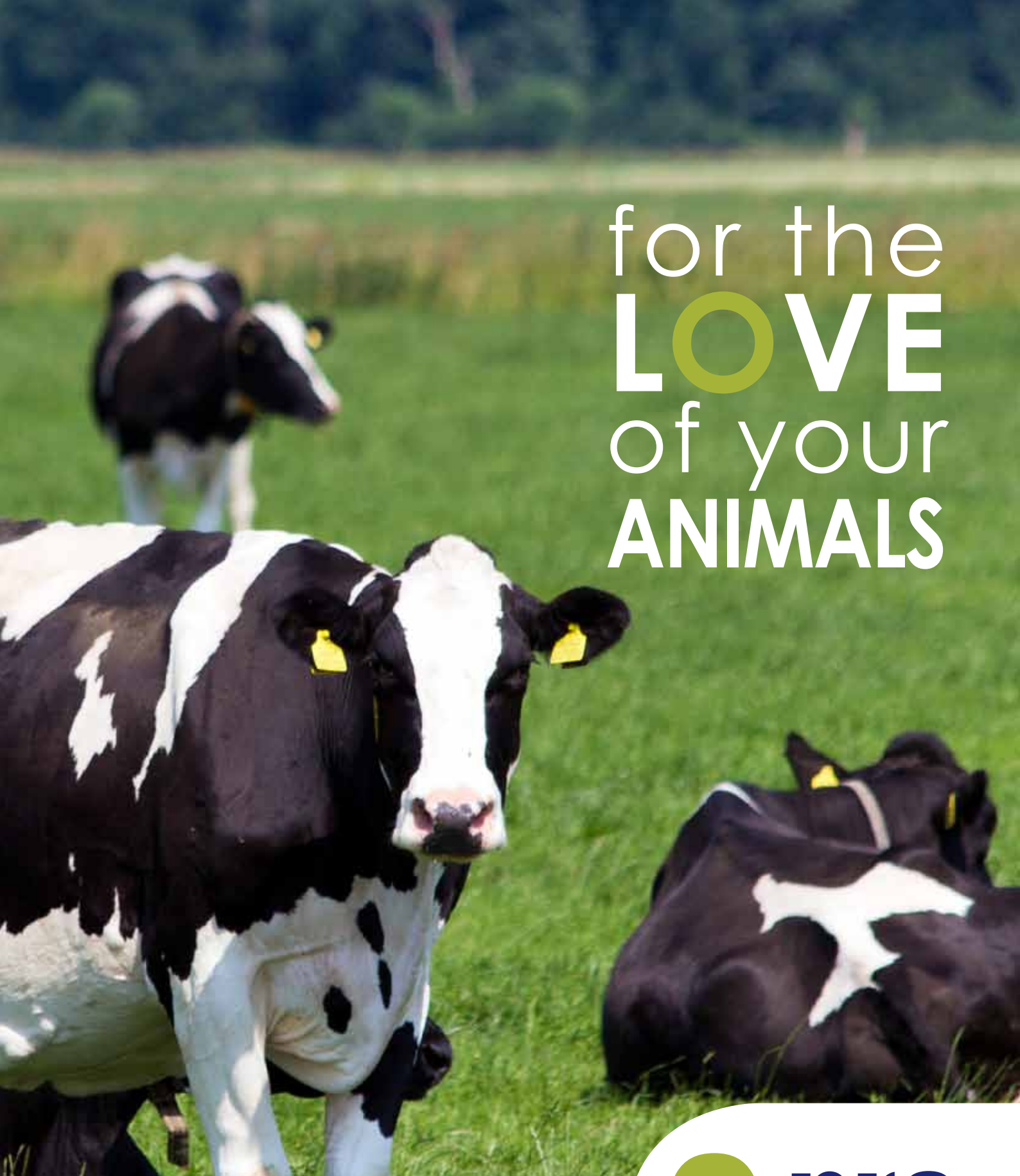
For more information and/or referral to your nearest technical adviser, contact our office on 058 303 9587



ANIMALS



For more information and/or referral to your nearest technical adviser, contact our office on 058 303 9587



for the
LOVE
of your
ANIMALS

DAIRY RANGE

Q *pro*
feeds

QPro Calf Starter

V21661 (Act 36 of 1947)

Product description

The purpose of the QPro Calf Starter ration is to stimulate intake in young calves so that rumen development can take place from monogastric physiology to ruminant physiology. This product contains bypass protein sources of high quality, energy as well as a balanced vitamin and trace mineral composition to ensure rapid and healthy growth. It also contains a coccidiostat for the prevention of coccidiosis in this early stage. The product is available in meal and pellets.

Feed recommendation

Feed QPro Calf Starter from 3 days. Intake differs depending on the breed. Feed until intakes are around 700 g/calf/day (Jersey type calf) or 1000 g/calf/day (Holstein type calf). These intakes should be between six to eight weeks of age (weaning). Thereafter QPro Complete Calf Grower should be fed.



For the **LOVE** of your

For more information and/or referral to your nearest technical adviser, contact our office on 058 303 9587

Specifications

Nutrient	Unit	Inclusion
Protein (min)	g/kg	180
Moisture (max)	g/kg	120
Fat (min/max)	g/kg	25/80
Fibre (max)	g/kg	90
Ca (max)	g/kg	16
P (min)	g/kg	6

Although not shown in the table, this product contains a full range of macro and trace minerals in the mineral pack, formulated according to the nutritional needs of the animal.

Packaging

Available in 50 kg bags.

Warning

This product contains NPN sources and/or registered medicaments. Feed strictly according to the instructions.



ANIMALS

Q-pro feeds

QPro Complete Calf Grower

V21663 (Act 36 of 1947)

Product description

QPro Complete Calf Grower is formulated to transition from QPro Calf Starter during weaning. The purpose of the product is to promote rapid growth and further rumen development and to prepare calves for higher fibre intake on the veld. This product also contains high-quality bypass protein sources, energy and a balanced vitamin and trace element composition to ensure rapid and healthy growth. It also contains a coccidiostat for the prevention of coccidiosis in this early stage. This product can be fed successfully to beef cattle calves as a creep feed. Provide the product in feeding troughs within purpose-built feed-creep camps. The product is available in meal and pellets.

Feed recommendation

With the transition from QPro Calf Starter, the adaptation has to take place over 5 days at 50% QPro Calf Starter and 50% QPro Complete Calf Grower. When feeding QPro Complete Calf Grower, animals must have free access to roughage/veld to stimulate fibre intake. Feed a maximum of 2,5% of body mass of QPro Complete Calf Grower. Ensure that animals always have free access to clean water.

For the **LOVE** of your

For more information and/or referral to your nearest technical adviser, contact our office on 058 303 9587

Specifications

Nutrient	Unit	Inclusion
Protein (min)	g/kg	150
NPN % (max)	%	13,4%
Urea (max)	g/kg	7
Moisture (max)	g/kg	120
Fat (min/max)	g/kg	25/70
Fibre (min/max)	g/kg	100/150
Ca (max)	g/kg	8
P (min)	g/kg	3,5

Although not shown in the table, this product contains a full range of macro and trace minerals in the mineral pack, formulated according to the nutritional needs of the animal.

Packaging

Available in 50 kg bags.

Warning

This product contains NPN sources and/or registered medicaments. Feed strictly according to the instructions.



ANIMALS

Q-pro feeds

QPro Ultramilk Maize Free

V23840 (Act 36 of 1947)

Product description

QPro Ultramilk Maize Free is a high-quality dairy concentrate used with ground maize to mix a semi-complete dairy meal according to the client's needs. This product contains high-quality protein and energy sources and is balanced with the necessary vitamins and trace minerals.

Feed recommendation

QPro Ultramilk Maize Free is a concentrate and therefore it must not be fed directly before mixing it with grain. See mixtures below. Feed at 500-750 g/litre milk/cow/day.

Specifications

Nutrient	Unit	Inclusion
Protein (min)	g/kg	290
NPN % (max)	%	19,79%
Urea (max)	g/kg	20
Moisture (max)	g/kg	120
Fat (min/max)	g/kg	80/100
Fibre (min/max)	g/kg	40/60
Ca (min/max)	g/kg	10/30
P (min)	g/kg	5

Although not shown in the table, this product contains a full range of macro and trace minerals in the mineral pack, formulated according to the nutritional needs of the animal.

For the LOVE of your

For more information and/or referral to your nearest technical adviser, contact our office on 058 303 9587

Packaging

Available in 50 kg bags or in bulk.

Warning

This product contains NPN sources and/or registered medicaments. Feed strictly according to the instructions.



Mixtures

	Dairy 19%	Dairy 21%
	Kg	Kg
Ultramilk Maize Free	550	600
Ground maize	450	400
Total	1000	1000
Protein (g/kg)	190	210

ANIMALS



QPro Steamup

V21642 (Act 36 of 1947)

Product description

QPro Steamup is a formulated meal for steaming up dairy cows just before calving (pre-partum). This meal is formulated with anionic salts to acidify the cation:anion balance. It serves to condition the cow's body to mobilise minerals from her skeleton and to help prevent cows from getting hypocalcemia (milk fever) during calving.

Feed recommendation

It is important for cows to receive a balanced diet during this phase to prepare her for the calving process as well as for her milk production phase. Feed QPro Steamup together with maize and high-quality dry roughage. Intake will vary between breed and frame size. Feed a daily amount of 3-4 kg (Jersey type) or 4-5 kg (Holstein type) per day. Feed from 4 weeks before calving up until calving. Do not feed for longer than 4 weeks because the acidifying effect will be lost.

For the **LOVE** of your

For more information and/or referral to your nearest technical adviser, contact our office on 058 303 9587

Specifications

Nutrient	Unit	Inclusion
Protein (min)	g/kg	140
NPN % (max)	%	30,75%
Urea (max)	g/kg	15
Moisture (max)	g/kg	120
Fat (min/max)	g/kg	25/85
Fibre (max)	g/kg	120
Ca (min/max)	g/kg	2,5/8
P (min)	g/kg	6

Although not shown in the table, this product contains a full range of macro and trace minerals in the mineral pack, formulated according to the nutritional needs of the animal.

Packaging

Available in 50 kg bags.

Warning

This product contains NPN sources and/or registered medicaments. Feed strictly according to the instructions.



ANIMALS

Q-pro feeds

QPro Elite 17

V23845 (Act 36 of 1947)

Product description

QPro Elite 17 is a dairy ration that serves as a concentrate for lactating cows. This product is formulated to provide additional protein, energy and a combination of the necessary vitamins, minerals and trace elements to cows grazing on veld or with access to silage. The product also contains ionophores that elicit optimal rumen digestion and improve production.

Feed recommendation

The cows must always have access to quality roughage, lucerne, silage or grazing. Feed Elite 17 at 500-750 g/litre milk/cow/day.



For the **LOVE** of your

For more information and/or referral to your nearest technical adviser, contact our office on 058 303 9587

Specifications

Nutrient	Unit	Inclusion
Protein (min)	g/kg	170
NPN % (max)	%	25,30%
Urea (max)	g/kg	15
Moisture (max)	g/kg	120
Fat (min/max)	g/kg	25/100
Fibre (max)	g/kg	120
Ca (min/max)	g/kg	8/15
P (min)	g/kg	5

Although not shown in the table, this product contains a full range of macro and trace minerals in the mineral pack, formulated according to the nutritional needs of the animal.

Packaging

Available in 50 kg bags or in bulk.

Warning

This product contains NPN sources and/or registered medicaments. Feed strictly according to the instructions.



ANIMALS

Q-pro feeds

QPro Elite 21

V21648 (Act 36 of 1947)

Product Description

QPro Elite 21 is a dairy ration serving as a concentrate for lactating cows. This product is formulated to provide additional protein, energy and a combination of the necessary vitamins, minerals and trace elements to cows grazing on veld or with access to silage. The product also contains ionophores that elicit optimal rumen digestion and improve production.

Feed recommendation

The cows must always have access to quality roughage, lucerne, silage or grazing. Feed Elite 21 at 500-750 g/litre milk/cow/day.



For the **LOVE** of your

For more information and/or referral to your nearest technical adviser, contact our office on 058 303 9587

Specifications

Nutrient	Unit	Inclusion
Protein (min)	g/kg	210
NPN % (max)	%	34,16%
Urea (max)	g/kg	25
Moisture (max)	g/kg	120
Fat (min/max)	g/kg	25/100
Fibre (max)	g/kg	120
Ca (min/max)	g/kg	8/15
P (min)	g/kg	5

Although not shown in the table, this product contains a full range of macro and trace minerals in the mineral pack, formulated according to the nutritional needs of the animal.

Packaging

Available in 50 kg bags or in bulk.

Warning

This product contains NPN sources and/or registered medicaments. Feed strictly according to the instructions.



ANIMALS

Q-pro feeds

For more information and/or referral to your nearest technical adviser, contact our office on 058 303 9587

A young antelope, possibly a reedbuck or similar, stands in a lush green bush. It has light brown fur and small, dark horns. The background is a soft-focus natural setting.

for the
LOVE
of your
ANIMALS

GAME RANGE

Q *pro*
feeds

QPro Game Maintenance Pellets

V28439 (Act 36 of 1947)

Product description

QPro Game Maintenance Pellets is a high-quality, balanced feed for game species needing supplementation. The product is lucerne-based, making it tasty. Game Maintenance Pellets are formulated to provide animals with sufficient protein, energy and trace minerals during dry spells. The product does not contain any urea and it is therefore safe to feed to all game species. The pellet size is 8 mm to suit all needs.

Feed recommendation

It is important that animals are adapted gradually to any form of supplement. Start by providing less product initially and increase it over a two-week period to get to the recommended intakes. When fed in a boma, sufficient long-fibre hay must be available. Provide sufficient trough space to prevent animals from hurting each other.

Category	Game species	Feed intake
Small game species	Suni, blue duiker, red duiker, klipspringer, ordinary duiker, bushbuck, springbok, impala, nyala	100-1000 g
Medium frame species	Red hartbeest, black wildebeest, blue wildebeest, kudu, gemsbok/oryx, roan antelope	1,5-3,5 kg
Large frame species	Eland, buffalo, rhino, giraffe	4-8 kg

For the **LOVE** of your

For more information and/or referral to your nearest technical adviser, contact our office on 058 303 9587

Specifications

Nutrient	Unit	Inclusion
Protein (min)	g/kg	120
Protein from NPN (max)	%	0%
Urea (max)	g/kg	0
Moisture (max)	g/kg	120
Fat (min)	g/kg	25
Fibre (min/max)	g/kg	120/200
Ca (min/max)	g/kg	9/10
P (min)	g/kg	3

Although not shown in the table, this product contains a full range of macro and trace minerals in the mineral pack, formulated according to the nutritional needs of the animal.

Packaging

Available in 50 kg bags or in bulk.



ANIMALS

Q-pro feeds

QPro Prestige Game Browser

V30622 (Act 36 of 1947)

Product description

QPro Prestige Game Browser is a high-quality, balanced feed for game species where production and growing out of game are important. The product is lucerne-based, making it tasty. Prestige Game Browser is formulated to feed to animals that are kept in a boma. The quality protein is necessary for the growing out of the animal and horn length. Prestige Game Browser is formulated to combine the best raw materials in the right ratios. The product can also be fed during feed shortages to provide sufficient protein, energy and trace minerals. The product does not contain any urea and it is therefore safe to feed to all game species. The pellet size is 8 mm to suit all needs. QPro Prestige Game Browser contains biotin.

Feed recommendation

It is important that animals are adapted gradually to any form of supplement. Start by providing less product initially and increase it over a two-week period to get to the recommended intakes. When fed in a boma, sufficient long-fibre hay must be available. Provide sufficient trough space to prevent animals from hurting each other.

Category	Game species	Feed intake
Small game species	Suni, blue duiker, red duiker, klipspringer, ordinary duiker, bushbuck, springbok, impala, nyala	80-800 g
Medium frame species	Red hartbeest, black wildebeest, blue wildebeest, kudu, gemsbok/oryx, roan antelope	1,2-2,8 kg
Large frame species	Eland, buffalo, rhino, giraffe	3,5-6 kg

For the LOVE of your

For more information and/or referral to your nearest technical adviser, contact our office on 058 303 9587

Specifications

Nutrient	Unit	Inclusion
Protein (min)	g/kg	150
Protein from NPN (max)	%	0%
Urea (max)	g/kg	0
Moisture (max)	g/kg	120
Fat (min)	g/kg	30
Fibre (min/max)	g/kg	170
Ca (min/max)	g/kg	20
P (min)	g/kg	5
Cu (max)	ppm	22,5 ppm

Although not shown in the table, this product contains a full range of macro and trace minerals in the mineral pack, formulated according to the nutritional needs of the animal.

Packaging

Available in 50 kg bags or in bulk.



ANIMALS

Q-pro feeds

How to contact us

FOR ADMIN AND LOGISTICAL NEEDS

Physical address:

Smithfield building, Joubert Street, Bethlehem, 9700
PO Box 2504, Bethlehem, 9700

Bethlehem:

Email: ordersbeth@qpro.co.za
Phone: +27 58 303 9587 or +27 58 303 9589

AREA REPRESENTATIVES

Sales Manager

Ockert van der Merwe

Email: ockert.vdmerwe@qpro.co.za • Cell phone: +27 79 290 9042

Eastern Free State/Natal/Mpumalanga

Tiaan Jacobs

Email: tiaan.jacobs@qpro.co.za • Cell phone: +27 64 088 1762

Northern Free State/Gauteng

Alfons Ferreira

Email: alfonsf@vkb.co.za • Cell phone: +27 79 879 6341

Southern Free State/Eastern Cape

Inus Wessels

Email: inus.wessels@vkb.co.za • Cell phone: +27 84 800 0514

Eastern Free State

Nardus Mostert

Email: nardus.mostert@vkb.co.za • Cell phone: +27 76 412 6708

Limpopo

Leon van Dijkhorst

Email: leon.vandijkhorst@qpro.co.za • Cell phone: +27 72 910 4040

For the LOVE of your ANIMALS

